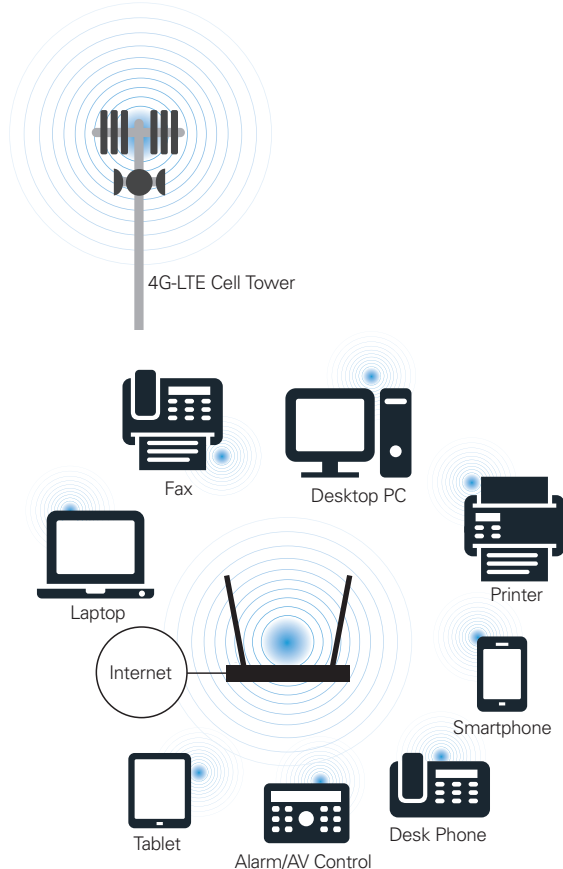


3G/4G-LTE 802.11n Wi-Fi Router, Dual VoIP Ports with Dual ATA's, Automatic WAN Redundancy, Remote Management (TR-069), Exceptional Performance

ReadyNet LTE520S 4G-LTE Wireless N Router is a combined wired/wireless network connection device designed to be the primary Internet access for various applications, such as small business/home offices, kiosks, SDWAN gateways, IoT devices, fax connectivity, and alarm systems – anywhere Internet access is needed.



FEATURES

- Integrated 3G/4G modem
- LTE-FDD Bands B2/B4/B5/B12/B13/B14/B25/B26/B66/B71: LTE-TDD: B41
- Hardware NAT, DHCP, security and layer 2 and 3 QoS
- 2X2 2.4GHz 802.11 b/g/n (300 Mbps)
- Supports VoIP FXS ports with SIP and T.38 FAX
- External antenna for LTE, internal antenna for Wi-Fi
- 1 10/100M auto-negotiation RJ45 WAN port, 4 10/100M auto-negotiation RJ45 LAN ports
- Automatic dialing, on-demand dialing, and fixed time dialing
- Built-in firewall features, IP, MAC, URL filtering which flexibly controls online access and time
- 3-way conference, call hold/forwarding/transfer/waiting
- Option 66, TFTP, HTTP, HTTPS and TR-069 for provisioning

GENERAL SPECIFICATIONS

VoIP SoC

MIPS Single-core 600MHz

Flash

16M Flash

RAM

64M DDR2 RAM

Power Supply

AC/DC Adapter
AC Input: 100~240V, 50~60Hz
DC Output: 12V, 1A

I/O Interfaces

1 RJ-45 WAN port (Ethernet 100 Base-T)
4 RJ-45 LAN ports (Ethernet 100 Base-T)
2 RJ-11 FXS ports
4G LTE SIM Card

Environmental

Operating Temperature: -5°~45° C
Storage Temperature: -25°~ 85° C
Relative Humidity: 10%~90% Non-condensing

Key Feature

LTE-FDD Bands B2/B4/B5/B12/B13/B14/
B25/B26/B66/B71: LTE-TDD: B41
Hardware NAT (HNAT) Engine with
100Mbps NAT/NAPT Speed
2X2 2.4G 802.11 b/g/n (300 Mbps)
Supports VoIP FXS Port with SIP and
T.38 FAX
External Antenna for LTE and Wi-Fi

Audio Codec

G.711 (A-Law, u-Law) with PESQ above 4.3
G.729 with PESQ above 3.7
Adaptive Jitter Buffer Management
Voice Activity Detection
Comfort Noise Generation
Echo Cancellation
T.30 FAX with G.711
Real Time FAX over IP via T.38

Protocols

SIP V2.0 (RFC 3261, 3262, 3263, 3264)
Backward Compatible with RFC2543
Session Timer (RFC4028)
SDP (RFC2327)
RTP/RTCP (RFC823/903)
NAPTR for SIP URI lookup (RFC2915)
STUN (RFC2030)
ARP/RARP (RFC 826/903)
SNTP (RFC 2030)
DHCP/PPPoE
HTTP Server for Web Management
TFTP/HTTP for Auto Provisioning
Message Waiting Indicator (RFC3842)
DHCP Option Codes for SIP (RFC3361)
DNS/DNS SRV (RFC1706 and RFC 2782)
IEEE802.1Q VLAN/802.1p and IP DSCP

Wireless

802.11 b/g/n support
4 SSID
Static WEP (64/128bit)
Dynamic WEP (64/128bit)
AES (CCMP/TKIP)
MAC Certification
WEP Certification
WPA-PAK/WPA-PSK(2.0)
WPA/WPA2
AP Isolation and MBSSID AP Isolation
WMM
WDS
WPS
Station List
RADIUS Certification and Billing
MAC Filter (different from wired MAC Filter)

Applications

LTE
NAT Mode and Bridge Mode
DDNS
MAC Address Cloning
SIP Proxy Redundancy
NAT Traversal by STUN
Built-in Wired Speed NAT Router
DHCP Server and Client
IP Conflict Detection
Port Forwarding, DMZ, SuperDMZ
802.1Q VLAN/802.1p, DSCP, Rate Limiting
VPN (PPTP,L2TP, IPSec) Passthrough
SNTP
IGMPv2
Firewall (SYN Flooding, IP Spoofing, Smurf
Attack, Ping of Death, DoS)

Management

Firmware Upgrade
Web Management Interface
IVR-driven Management Interface
Local and Remote Syslog (RFC3164)
Auto-provisioning
SNTP Time Synchronization
Multi-user Level
SNMP v2
Telnet
TR-069
System Log: Local Log and Remote Log

Call Features

3-way Conference
Call Hold
Call Forwarding
Call Transfer
Call Waiting
Caller ID and CWCID
DTMF Relay: Inband, Outband and SIP Info
QoS Layer 3
Call Log
CID/CWCID
Dial Plan
DTMF Mode: Inband, Outband and SIP Info

Regulatory

FCC Part 15 Class B
CE
RoHS

Dimensions

(L) 188 x (W) 155 x (H) 29mm
Weight - 331g (without package)

Warranty

1 Year Limited Product Warranty