

cnMaestro™ c4000

- On-Premise Controller
- Up to 200 managed devices
- Consistent UI / UX / features
- 2 SFP Gigabit combo ports
- Tabletop and rack mount kit included



Controller Appliance for cnPilot Wi-Fi, cnMatrix Ethernet, PTP, PMP Broadband, and cnReach IIOT

Extend the power of cnMaestro to on-premises network management using the c4000 Controller Appliance

BUILT ON cnMAESTRO

cnMaestro flexible deployment models manage the network from the Cloud Controller, on-premises server Controller, or the c4000 Controller Appliance.

Regardless of the deployment model, cnMaestro always delivers:

- The same User Interface
- Zero touch onboarding to simplify discovery, adoption and provisioning
- Manage and view device inventory reports, status, firmware, and uptime from a single console
- Monitor network key performance metrics including RF noise floor, co-channel interference, packet errors and more.
- Monitor connected client key performance metrics including signal level, device type, datarate.
- PRO Reports extend network and client monitoring up to 28 parameters from sophisticated to simple metrics.
- Integrated Help Desk diagnostic tool set
 - Initiate and view packet capture from any AP
 - Initiate on-demand network interference and noise floor scan
- Integrated Alarms and Dashboard view provides global drill-down map to overview the entire network, globally, regionally, locally.

MSP TENANTS, GUEST PORTAL, MONETIZE HOTSPOT

MSP mode allows a service provider to create and manage tenant networks under the MSP private label brand.

For guest access networks in hotels, enterprise or public venues, cnMaestro provides a central portal creation tool to quickly design and deploy a professional portal page to thousands of access points for wired or wireless network access.

Monetize a hotspot networks with social media login, Facebook Express Wi-Fi, and integrated payment gateway. Hotspot portal allows creation of time, rate and volume limited traffic profiles enabled by vouchers or self-signup.

MARKETS FOR c4000 CONTROLLER APPLIANCE

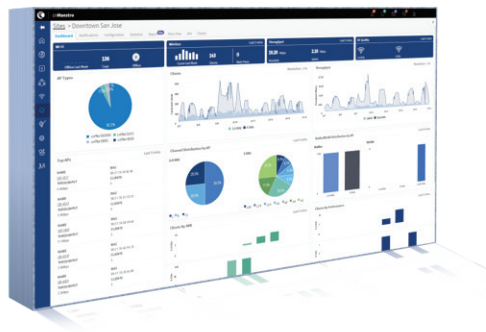
The c4000 Controller Appliance is ideal where quick and easy deployment on site is required.

Small and medium size hotels, K12 education, MDU, dormitory housing and enterprise networks will find the C4000 sized for the application.

The base c4000 Appliance supports 50 access points and 10,000 clients while cnMaestro PRO increases support to 200 managed devices; combination of Cambium cnPilot Enterprise access points, Residential access points, cnMatrix Ethernet PoE Switches, PTP and PMP Broadband as well as cnReach IIOT.

cnMaestro™ c4000

Same powerful features of cnMaestro without a dedicated server or Cloud connectivity



ORDERING INFORMATION

PL-C4000XXA-WW	cnMaestro C4000 Controller Appliance
<i>Replace "XX" with: AN (AU/NZ) / IN / AR / CN / US / EU / UK / BR</i>	
AX-12V3Annnn	12VDC 3A power injector with locking 2.5mm x 5.5mm DC plug. 1.2m length
XA-RMKC4000-WW	Rack Mount kit, C4000 cnMaestro Appliance

cnMAESTO c4000 CONTROLLER FEATURES

Multi-admin Role based Access control	Manage admin privileges to monitor and/or set network and device configuration
Help Desk Troubleshooting Tools	Remote packet capture Initiate interference and noise floor scan for any AP
Single pane of glass	Single screen wireless view, wireless backhaul, 802.11 access points, Ethernet switches, plus connected wired and wireless clients
Frictionless On-Boarding	Secure large scale bulk onboarding Zero touch bulk provisioning, firmware updates
Device Inventory	Inventory device tracking, status, firmware, and reports
Monitor	Alarms and events management – Critical/Major/Minor Statistics graphs and table display Alarm traffic light display
Key Stats	7 day historical stats
Managed Services Platform	Create and manage tenant accounts with customized views and permission. White label MSP brand to tenant accounts
Portal Host	Centrally configure and manage hotspot
Voucher	Time, Rate, and Volume limited guest access up to 1,000 client devices
Social login	Google, Facebook credentials plus Facebook Express Wi-Fi
Hierarchy View	Group APs into Groups, assign to Sites for easy hierarchical views and management
Client Insights	Client history with networks aggregate and per client statistics

HARDWARE SPECIFICATIONS

CPU and Memory	8-core Intel CPU 64GB SSD, 8GB RAM
Management I/O	GE Ethernet management port RJ45 console, 9600-8-N-1 USB2.0 for file maintenance Hardware reset button LEDs: Power, SSD
Power	12VDC, 4a, 2.5mm locking connector 100V - 240V AC/DC power supply
Data Ports	2 x combo ports; 10/100/1000Mb SFP socket or Copper RJ45
Physical	250 x 44 x 190 (mm) 2.3Kg 0 - 40C operating temperature Humidity 95% NC Desktop or Rack. Rack mount included
Certification	CE, 60950-1, CB, CCC, RoHS, REACH, WEEE

