

Email not displaying correctly? View it in your browser.



NEWSLETTER

NEW PROTOCOL FOR LIGOPTP MIMO EQUIPMENT

Download NOW!

jet MiMo2 New protocol with improved distance and performance

The image shows an aerial view of a field with a large, 3D, green and white text overlay that reads "Download NOW!". Below the text is a logo for "jet MiMo2" featuring a green circular icon with a white grid pattern and the word "jet" in a small box. The background is a dark, overcast sky over a field.

Download new
FW image



Download link
setup tutorial

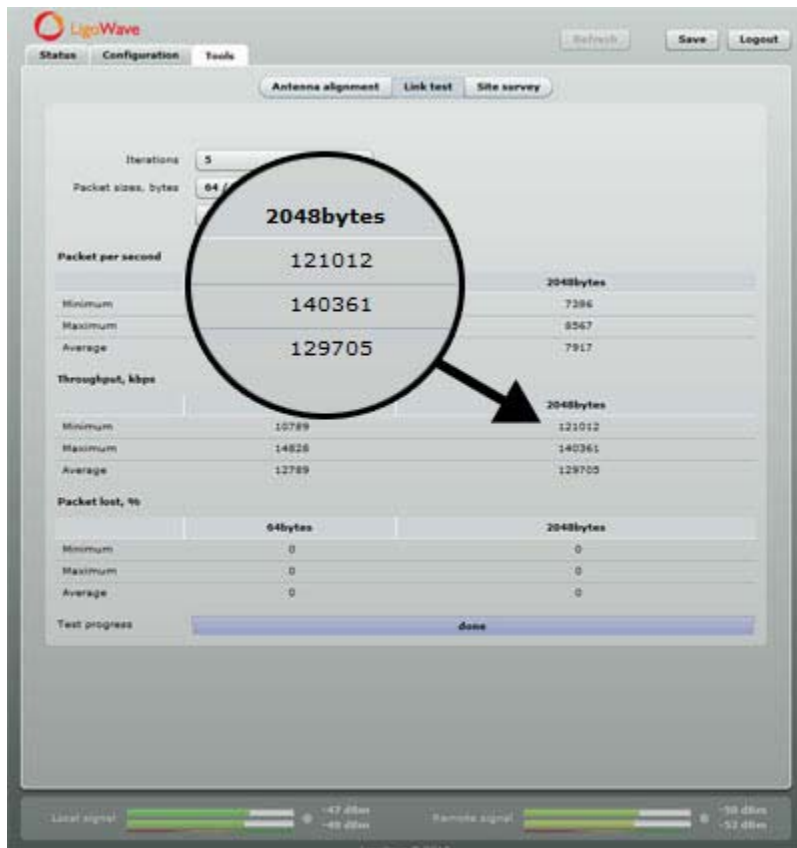


- Channel: 5210 MHz;
- Channel width: 40 MHz;
- Data rate: 270 Mbps;
- Transmit power: 25 dBm;
- Signal levels on a master and remote side: -47; -49/ -50; -52.



Picture 1. 10 km link on map





Picture 3. 10 km Link performance

Successful tests in Mexico

Some customers also had a chance to test the latest firmware and see what results they can achieve on long-distance links. LigoWave customer in Mexico was happy to try out the new beta software and achieved such results on their 3 links:

- Tule(hill) - Culagua(hill) - 70 Km link - Throughput 74 Mbps
- Culagua(hill) - La viga(hill) - 47 Km link - Throughput 122 Mbps
- La viga(hill) - Neveria(hill) - 77 Km link - Throughput 70 Mbps



Picture 4. LigoPTP MiMo in Mexico